



MONTHLY MEMBERSHIP PROGRESS REPORT

District 2 A1

Results as of: 3/31/2017

GMT: HAL GRIFFIN

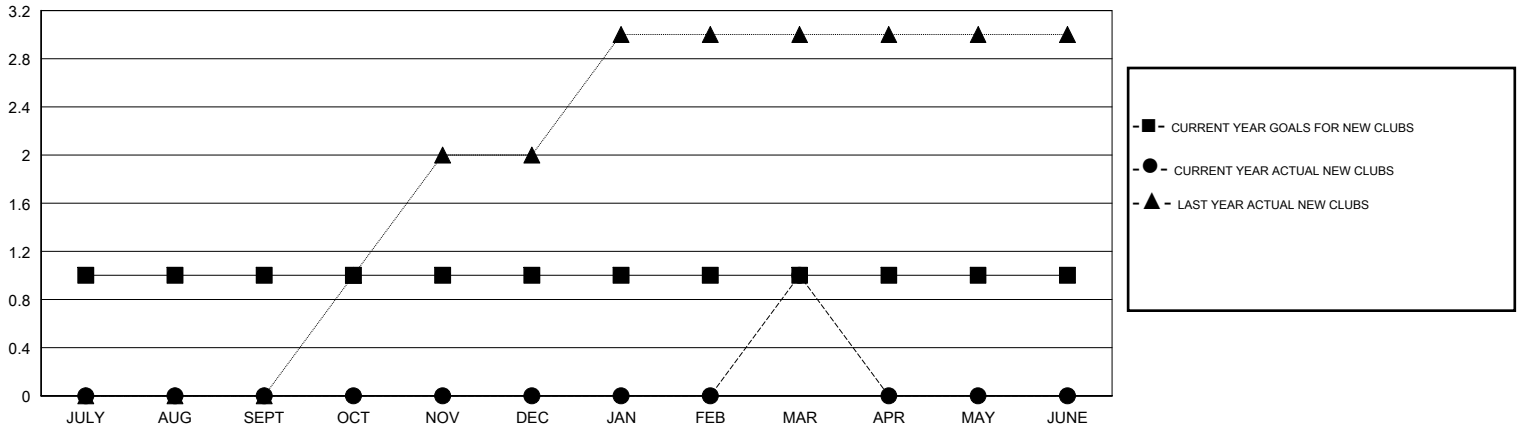
LOCATION TEXAS

GMT CA

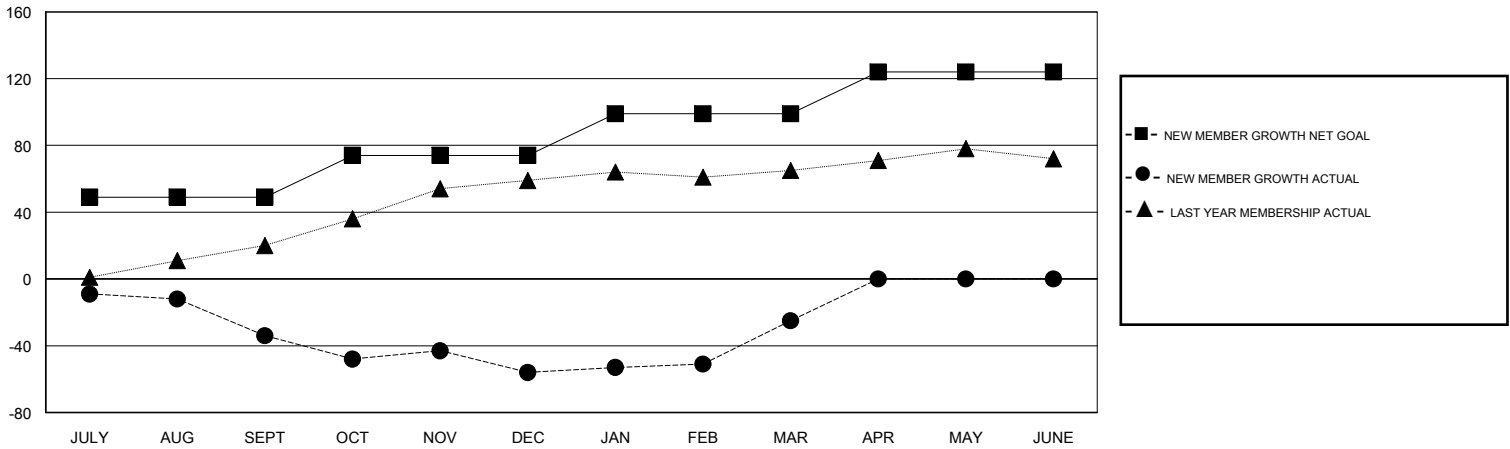
Clubs			
RESULTS FOR 2016-2017			
QUARTER	NEW CLUB GOAL	NEW CLUBS	DROPPED CLUBS
JULY/AUG/SEPT	1	0	0
OCT/NOV/DEC	0	0	1
JAN/FEB/MAR	0	1	0
APR/MAY/JUNE	0	0	0

Members			
RESULTS FOR 2016-2017			
QUARTER	NEW MEMBER GROWTH NET GOAL (not reinstated or transfers)	NEW MEMBER GROWTH ACTUAL (not reinstated or transfers)	DROPPED MEMBERS ACTUAL (including transfers)
JULY/AUG/SEPT	49	48	82
OCT/NOV/DEC	25	30	52
JAN/FEB/MAR	25	81	50
APR/MAY/JUNE	25	0	0

GOALS AND ACTUAL NEW CLUBS CUMULATIVE



GOALS AND ACTUAL MEMBERS CUMULATIVE



DROPPED CLUBS: 1	37 CLUBS OF 50 ADDED 1 OR MORE NEW MEMBERS	<u>GENDER DISTRIBUTION</u>	
DROPPED MEMBERS		MALE	920 (69.75%)
DECEASED	CLICK HERE FOR CUMULATIVE MEMBERSHIP DATA	FEMALE	399 (30.25%)
CLUB CANCELLED		TOTAL FAMILY UNIT MEMBERS	179
OTHER		FAMILY MEMBERS PAYING HALF DUES	91
TOTAL		184	